



Central Bank of Kenya

Weekly Bulletin

November 22, 2024



RECENT MONETARY AND FINANCIAL DEVELOPMENTS

Exchange Rates

The Kenya Shilling remained stable against major international and regional currencies during the week ending November 21. It exchanged at KSh 129.52 per US dollar on November 21, compared to KSh 129.35 per US dollar on November 14 (**Table 1**).

Foreign Exchange Reserves

The usable foreign exchange reserves remained adequate at USD 9,144 million (4.7 months of import cover) as of November 21. This meets the CBK's statutory requirement to endeavour to maintain at least 4 months of import cover (**Table 2**).

Money Market

Liquidity in the money market remained adequate during the week ending November 21, supported by open market operations. Commercial banks' excess reserves stood at KSh 48.4 billion in relation to the 4.25 percent cash reserves requirement (CRR). The average interbank rate remained stable at 11.87 percent on November 21. During the week, the average number of interbank deals increased to 39 from 33 in the previous week, while the average value traded increased to KSh 29.2 billion from KSh 27.5 billion in the previous week (**Table 3**).

Government Securities Market

The Treasury Bill auction of November 21 received bids totalling KSh 77.2 billion against an advertised amount of KSh 24.0 billion, representing a performance of 321.8 percent. Interest rates on the 91-day, 182-day, and 364-day Treasury bills declined (**Table 4**).

Equity Market

At the Nairobi Securities Exchange, the NASI, NSE 25, NSE 20 share price index decreased by 2.3 percent, 2.8 percent and 2.5 percent, respectively during the week ending November 21. Market capitalization and total shares traded decreased by 2.4 percent and 42.4 percent, while equity turnover increased by 24.0 percent, respectively (**Table 6**).

Bond Market

Bond turnover in the domestic secondary market increased by 36.5 percent during the week ending November 21 (**Table 6**). In the international market, yields on Kenya's Eurobonds on average increased by 11.23 basis points. The yield on the 10- year Eurobond for Angola also increased (**Chart 2**).

Global Trends

Inflation in advanced economies showed mixed trends during the week ending November 21, 2024. Inflation in the United Kingdom increased to 2.3 percent in October from 1.7 percent in September, while Japan's inflation eased to 2.3 percent in October from 2.5 percent in September. The US dollar index remained stable against a basket of major currencies during the week ending November 21, 2024.

International oil prices increased during the week ending November 21, driven by heightened tensions between Russia and Ukraine. The price of Murban oil increased to USD 75.56 on November 21, 2024, from USD 73.87 on November 14, 2024.

Table 1: Kenya Shilling Exchange Rates

	USD	Sterling Pound	Euro	100 Japanese Yen	Uganda Shilling*	Tanzania Shilling*	Rwandese Franc*	Burundi Franc*
8-Nov-24	129.21	167.56	139.34	84.51	28.40	20.82	10.52	22.85
11-Nov-24	129.23	166.90	138.50	84.21	28.32	20.66	10.52	22.85
12-Nov-24	129.21	166.28	137.53	83.96	28.35	20.59	10.61	22.85
13-Nov-24	129.25	165.48	137.31	83.67	28.43	20.58	10.62	22.85
14-Nov-24	129.35	164.80	137.44	83.46	28.37	20.56	10.61	22.83
Nov 8-14	129.25	166.20	138.02	83.96	28.38	20.64	10.58	22.84
15-Nov-24	129.35	163.95	136.35	82.73	28.37	20.57	10.53	22.83
18-Nov-24	129.43	163.68	136.67	83.14	28.35	20.55	10.60	22.82
19-Nov-24	129.51	163.63	136.89	83.72	28.35	20.54	10.53	22.80
20-Nov-24	129.49	164.26	137.12	83.49	28.46	20.54	10.54	22.81
21-Nov-24	129.52	164.08	136.78	83.18	28.49	20.48	10.65	22.80
Nov 15-21	129.46	163.92	136.76	83.25	28.41	20.54	10.57	22.81

*Units of currency per Kenya Shilling

Source: Central Bank of Kenya

Table 2: Usable Foreign Exchange Reserves (USD Million)

	24-Oct-24	31-Oct-24	7-Nov-24	14-Nov-24	21-Nov-24
1. CBK Usable Foreign Exchange Reserves (USD Million)*	8,496	8,586	9,323	9,276	9,144
2. CBK Usable Foreign Exchange Reserves (Months of Import Cover)**	4.4	4.4	4.8	4.8	4.7

*Excludes encumbered reserves

**Based on 36 months average of imports of goods and non-factor services

Source: Central Bank of Kenya

Table 3: Money Market

Date	Number of Deals	Value (KSh M)	Average Interbank Rate (%)
8-Nov-24	61	56,650.00	12.08
11-Nov-24	33	29,980.00	12.13
12-Nov-24	28	16,790.00	12.10
13-Nov-24	23	17,390.00	12.01
14-Nov-24	20	16,800.00	11.87
Nov 8-14	33	27,522.00	12.04
15-Nov-24	32	27,730.00	11.88
18-Nov-24	37	31,010.00	11.88
19-Nov-24	44	29,235.00	11.88
20-Nov-24	37	29,480.00	11.88
21-Nov-24	44	28,690.00	11.87
Nov 15-21	39	29,229.00	11.88

Source: Central Bank of Kenya

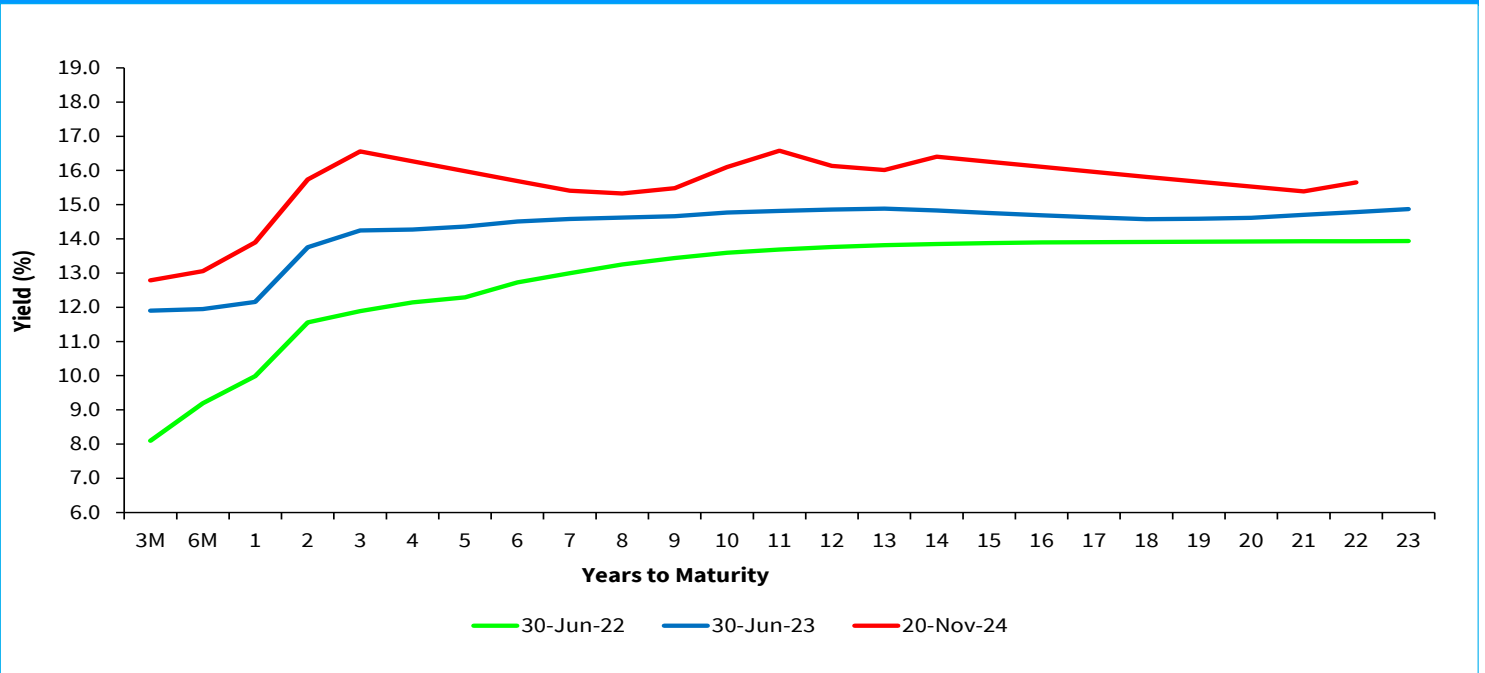
Table 4: Performance of Treasury Bill Auctions						
91-Day Treasury Bills						
Date of Auction	27-Jun-24	29-Aug-24	26-Sep-24	31-Oct-24	14-Nov-24	21-Nov-24
Amount Offered (KSh M)	4,000.00	4,000.00	4,000.00	4,000.00	4,000.00	4,000.00
Bids Received (KSh M)	4,361.03	17,496.40	6,919.23	15,007.98	30,388.12	24,933.80
Amount Accepted (KSh M)	2,745.34	16,953.43	3,370.90	7,366.03	4,098.02	13,069.92
Maturities (KSh M)	3,922.10	18,029.30	2,377.75	13,721.90	10,812.95	7,958.50
Average Interest Rate (%)	15.977	15.784	15.718	13.966	12.791	12.034
182-Day Treasury Bills						
Date of Auction	27-Jun-24	29-Aug-24	26-Sep-24	31-Oct-24	14-Nov-24	21-Nov-24
Amount Offered (KSh M)	10,000.00	10,000.00	10,000.00	10,000.00	10,000.00	10,000.00
Bids Received (KSh M)	1,494.42	4,451.13	5,437.90	23,241.04	32,333.33	17,140.68
Amount Accepted (KSh M)	1,479.67	4,443.43	3,330.51	5,783.01	14,094.09	12,486.14
Maturities (KSh M)	293.25	2,088.35	2,144.40	5,518.70	19,146.45	12,286.05
Average Interest Rate (%)	16.764	16.633	16.589	14.523	13.059	12.210
364-Day Treasury Bills						
Date of Auction	27-Jun-24	29-Aug-24	26-Sep-24	31-Oct-24	14-Nov-24	21-Nov-24
Amount Offered (KSh M)	10,000.00	10,000.00	10,000.00	10,000.00	10,000.00	10,000.00
Bids Received (KSh M)	1,833.64	2,254.39	8,567.15	23,917.48	32,817.54	35,161.76
Amount Accepted (KSh M)	1,828.51	2,248.06	5,764.78	14,990.38	24,811.62	20,817.87
Maturities (KSh M)	1,679.00	567.65	522.70	978.25	3,304.05	2,055.70
Average Interest Rate (%)	16.791	16.842	16.800	14.968	13.899	13.295

Source: Central Bank of Kenya

Table 5: Performance of Treasury Bond Auctions								
Date of Auction	18-Sep-24		09-Oct-24		17-Oct-24	06-Nov-24		13-Nov-24
	RE-OPEN		RE-OPEN		TAP	RE-OPEN		RE-OPEN
Tenor	FXD1/ 2024/010	FXD1/ 2016/020	FXD1/ 2016/010	FXD1/ 2022/010	FXD1/ 2022/010	FXD1/ 2023/010	FXD1/ 2022/015	FXD1/ 2024/010
Amount offered (KSh M)	30,000.00		30,000.00		15,000.00	25,000.00		20,000.00
Bids received (KSh M)	13,396.00	9,246.10	36,615.53	14,349.29	16,497.15	16,331.02	16,717.40	55,575.58
Amount Accepted (KSh M)	11,565.37	7,711.12	28,026.11	3,251.00	15,092.95	10,286.04	15,397.04	30,515.91
Maturities (KSh M)								
Average interest Rate (%)	16.87	17.29	16.98	16.95	16.95	15.97	16.30	15.86

Source: Central Bank of Kenya

Chart 1: Government Securities Yield Curve



Source: Nairobi Securities Exchange (NSE)

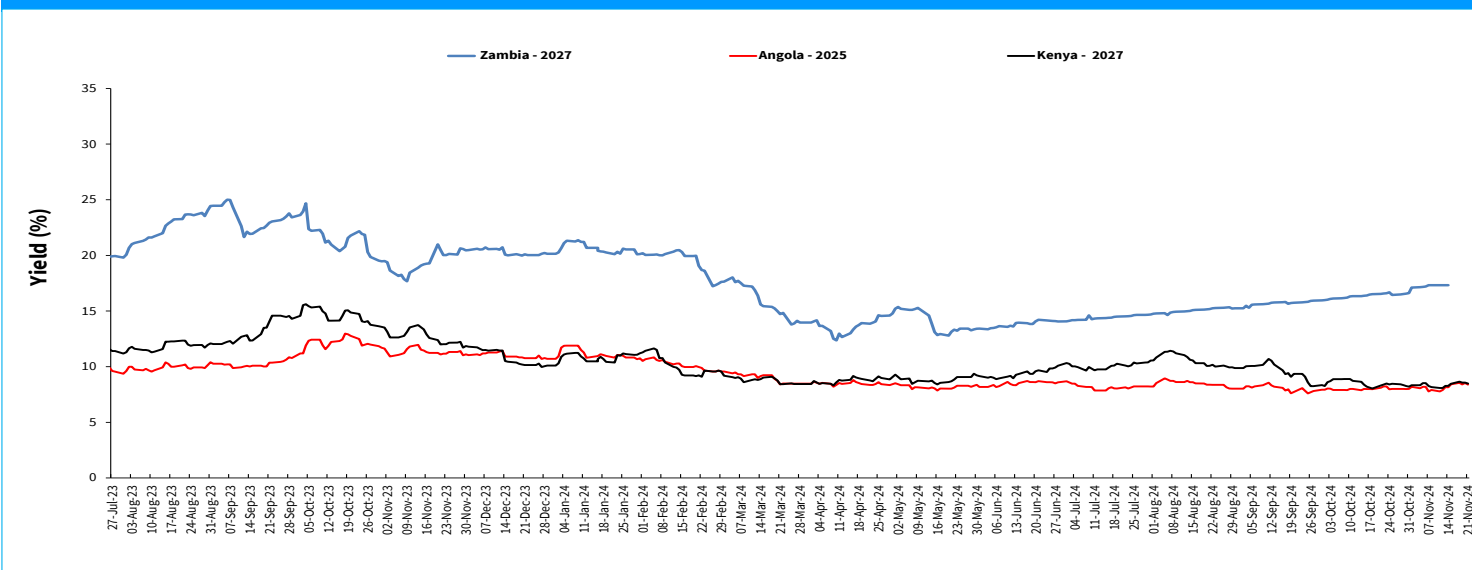
Table 6: Performance of Key Market Indicators

INDICATOR	NASI 100=2008	NSE 25 Share Index	NSE 20 Share Index 100=1996	Total Deals (Equity)	Total Shares Traded (Mil- lion)	Equity Turnover (KSh Million)	Market Capitaliza- tion (KSh Billion)	Bonds Turnover (KSh Million)	Eurobond Yields (%)					
									7-Year 2027	10-Year 2028	6-Year 2031	12-Year 2032	13-Year 2034	30-Year 2048
8-Nov-24	115.59	3187.43	1927.51	1,464.00	9.91	322.03	1809.49	3746.55	8.172	8.941	9.836	9.799	9.691	10.133
11-Nov-24	115.06	3183.23	1926.33	1,705.00	16.18	96.98	1801.16	2972.35	8.080	8.895	9.805	9.771	9.691	10.117
12-Nov-24	115.20	3195.87	1929.70	1,638.00	22.87	139.42	1803.30	7722.80	8.083	9.034	9.993	9.912	9.817	10.199
13-Nov-24	115.68	3212.40	1937.50	1,416.00	12.87	204.51	1810.85	3378.20	8.269	9.035	10.025	9.941	9.843	10.232
14-Nov-24	115.36	3201.87	1932.75	1,563.00	15.98	161.83	1805.82	5249.35	8.276	9.039	9.993	9.944	9.845	10.232
Nov 8-14	115.36	3201.87	1,932.75	7,786.00	77.81	924.76	1,805.82	23,069.25	8.276	9.039	9.993	9.944	9.845	10.232
15-Nov-24	115.01	3195.31	1930.23	1,450	18	99	1,800	4099.4	8.465	9.227	10.184	10.115	10.024	10.333
18-Nov-24	114.16	3177.14	1921.89	1,416	30	223	1,787	1960.85	8.655	9.322	10.312	10.231	10.153	10.435
19-Nov-24	113.43	3159.60	1910.83	1,509	19	283	1,776	6410.9	8.564	9.23	10.248	10.145	10.077	10.35
20-Nov-24	112.71	3124.96	1909.93	1,552	20	282	1,764	10968.65	8.567	9.231	10.216	10.089	10.026	10.299
21-Nov-24	112.71	3113.49	1885.37	1,492	23	259	1,763	8050.05	8.481	9.095	10.121	10.062	9.978	10.266
Nov 15-21	112.71	3113.49	1885.37	7,419.00	110.81	1,146.89	1,762.88	31,489.85	8.481	9.095	10.121	10.062	9.978	10.266
Weekly Changes (%)	-2.30	-2.76	-2.45	-4.71	42.40	24.02	-2.38	36.50	0.205*	0.056*	0.128*	0.118*	0.133*	0.034*

* Percentage points

Source: Nairobi Securities Exchange (NSE) and Thomson Reuters

Chart 2: Yields on 10-Year Eurobonds for Selected Countries



Source: London Stock Exchange

Table 7: Government Domestic Debt (KSh Billion)

	29-Dec-23	28-Jun-24	31-Jul-24	28-Aug-24	25-Sep-24	30-Oct-24	13-Nov-24	20-Nov-24
1. Treasury Bills (Excluding Repos)	546.90	615.89	651.89	673.95	703.76	760.13	793.16	807.04
<i>(As % of total securities)</i>	11.35	11.75	12.32	12.47	12.82	13.66	14.10	14.29
2. Treasury Bonds	4,271.82	4,627.12	4,637.89	4,729.22	4,785.62	4,802.76	4,831.53	4,840.35
<i>(As % of total securities)</i>	88.65	88.25	87.68	87.53	87.18	86.34	85.90	85.71
3. Total Securities (1+2)	4,818.72	5,243.01	5,289.78	5,403.17	5,489.38	5,562.89	5,624.69	5,647.39
4. Overdraft at Central Bank	94.13	61.02	60.53	49.43	63.36	28.63	94.72	51.29
5. Other Domestic debt*	137.26	106.25	103.06	103.07	104.73	103.69	103.75	102.09
<i>of which IMF funds on-lent to Government</i>	104.24	83.54	82.61	82.61	83.52	82.63	82.63	81.08
6. Gross Domestic Debt (3+4+5)	5,050.11	5,410.28	5,453.37	5,555.66	5,657.47	5,695.22	5,823.16	5,800.77

* Other domestic debt includes clearing items in transit, advances from commercial banks and Pre-1997 Government Overdraft.

Source: Central Bank of Kenya

Table 8: Composition of Government Domestic Debt by Instrument (Percent)

	29-Dec-23	28-Jun-24	31-Jul-24	28-Aug-24	25-Sep-24	30-Oct-24	13-Nov-24	20-Nov-24
Treasury bills (Excluding Repos)	10.83	11.38	11.95	12.13	12.44	13.35	13.62	13.91
Treasury bonds	84.59	85.52	85.05	85.12	84.59	84.33	82.97	83.44
Overdraft at Central Bank	1.86	1.13	1.11	0.89	1.12	0.50	1.63	0.88
Other domestic debt	2.72	1.96	1.89	1.86	1.85	1.82	1.78	1.76
<i>of which IMF fund on lent to government</i>	2.06	1.54	1.51	1.49	1.48	1.45	1.42	1.40
TOTAL	100.00	100.00	100.00	100.00	100.00	100.00	100.00	100.00

Source: Central Bank of Kenya

Table 9: Government Domestic Debt by Holder (Percent)

	29-Dec-23	28-Jun-24	31-Jul-24	28-Aug-24	25-Sep-24	30-Oct-24	13-Nov-24	20-Nov-24
Banking Institutions	46.07	45.12	45.12	44.81	45.00	45.09	45.80	45.50
Insurance Companies	7.23	7.23	7.21	7.20	7.15	7.20	7.12	7.15
Parastatals	5.47	5.13	5.08	5.34	5.30	5.45	5.38	5.49
Pension Funds*	29.93	29.60	29.39	29.14	29.12	29.16	28.82	28.97
Other Investors	11.30	12.92	13.19	13.50	13.43	13.11	12.88	12.89
Total	100.00	100.00	100.00	100.00	100.00	100.00	100.00	100.00

* Includes pension funds and custodial/ Nominee Accounts

Source: Central Bank of Kenya

Table 10: Public Debt

	Dec-21	Jun-22	Dec-22	Jun-23	Sep-23	Dec-23	Mar-24	May-24	Jun-24	Sep-24*
Domestic debt (KSh Bn)	4,032.37	4,288.33	4,472.84	4,832.11	4,917.47	5,050.11	5,235.19	5,319.89	5,410.28	5,601.71
Public & Publicly Guaranteed External debt (USD Bn)	36.90	36.58	37.88	38.76	38.27	38.92	39.18	39.30	39.77	40.16
Public & Publicly Guaranteed External debt (KSh Bn)	4,174.37	4,290.73	4,673.14	5,446.56	5,667.80	6,089.58	5,163.42	5,118.31	5,150.84	5,188.37
Public debt (KSh Bn)	8,206.74	8,579.06	9,145.98	10,278.67	10,585.27	11,139.69	10,398.61	10,438.19	10,561.12	10,790.08

* Provisional

Source: The National Treasury and Central Bank of Kenya